

# **Aktakom Power Manager Express 3**

User's manual

# Contents

<b>Part I Introduction</b>	<b>3</b>
1 About.....	3
<b>Part II Getting Started</b>	<b>3</b>
1 LICENSE CONTRACT.....	3
2 Minimum computer requirements.....	6
3 Preparation for use.....	6
Hardware installation .....	6
Software installation .....	6
Checking device readiness .....	7
<b>Part III Operating procedure</b>	<b>8</b>
1 How to use the program.....	8
2 Voice Guide Mode.....	9
3 Presets list edit.....	11
<b>Part IV Service</b>	<b>11</b>
1 Update and technical support.....	11
<b>Index</b>	<b>0</b>

# 1 Introduction

## 1.1 About...



The Aktakom Power Manager Express 3 application is designed to manage AKTAKOM APS-7205 power supplies.

# 2 Getting Started

## 2.1 LICENSE CONTRACT

1. The present license contract is made between You and the Rightholder of the exclusive right on the present program, specified in the Operations manual to the device to which, or with which, the program was purchased (hereinafter referred to as “rightholder”). The conclusion of contract does not result in the lapse of exclusive right on the program to you.

2. While installing, making a copy, uploading, carrying out an access or somehow using the program, you understand and agree with the conditions of the present license contract. If you do not agree with the conditions of the present license contract, delete all program files from your information storage devices and stop using the program.

3. You have the right to install, use, display and run only one copy of the program for only one device to which, or with which, the program was purchased, the quantity of PCs at which the program can be installed is not limited. It is restricted to use the program for several devices.

4. You do not have the right to decompile, disassemble, create new versions, make alterations in all parts of the program.

5. You do not have the right to sell, rent, on loan or somehow pass the copy of the program, as well as to gain from the distribution of the program. You are not allowed to

distribute this program together with any commercial programs and printing.

6. You are allowed to make one backup copy, and you have the right to use it only for archival purposes and for replacement of the legally acceptable purchased copy in cases, when this copy is lost, destroyed or get unsuitable to use. Herewith the copy of the program can not be used for other purposes and must be destroyed if the possession of the copy of such program is not lawful any more.

7. Lawful purchased copy of the program is a copy, which is obtained by one of the following ways:

a. With a set together with the device, downloadable from the manufacturers or distributor website.

The cost of the copy of the program is included in this case in the cost of the device. In case of loss of such a copy of the program it is not subject to free replacement. On the issue of the new version of the program the rightholder can provide you on your demand with the access to copy the new version of the program from the web site in Internet, additionally indicated by the rightholder. After getting the updates it is restricted to use the program, which is the base for getting updating.

Attention! Not all previously released devices and new versions of the program are compatible.

Programs, which copies are being distributed in the following way could have a demo version, which is being distributed in the same way as it is described in the subparagraph "b" of the present paragraph.

b. Separate from the device a copy is downloadable from the manufacturers or distributor website.

8. The copy of the program is distributed "AS IS".

- 
- a. THERE ARE NO GUARANTIES ENCLOSED AND PROVIDED.
- b. YOU USE THE PROGRAM ON YOUR OWN ACCOUNT. THE COPY OF THE PROGRAM IS PROVIDED “ IN THE WAY LIKE IT IS” WITHOUT ANY GUARANTEES, EVIDENT OR IMPLIED, INCLUDING, BUT NOT BEING LIMITED, BY IMPLIED WARRANTIES OF THE CONSUMER PROPERTIES OR OF FITNESS FOR CERTAIN PURPOSES.
- c. THE RIGHTHOLDER DOES NOT GUARANTEE, THAT THE FUNCTIONS OF THE PROGRAM WOULD MEET ALL YOUR REQUIREMENTS, THAT THE PROGRAM WOULD WORK FAIL-SAFE OR THAT ERRORS WOULD BE DEBUGED. IF THE ERRORS IN THE PROGRAM WOULD CAUSE YOU DAMAGE, ALL REPAIR COSTS, MAINTENANCE AND SYSTEMS RECOVERY COSTS ARE BORNE BY YOU (BUT NOT THE RIGHTHOLDER.)
- d. UNDER NO CIRCUMSTANCES THE RIGHTHOLDER IS RESPONSIBLE FOR ACCIDENTAL, DIRECT OR INDIRECT, MATERIAL OR ANY OTHER KIND OF DAMAGE (INCLUDING THE LOSS OF PROFIT, LOSS OF THE BUSINESS INFORMATION AND OTHER FINANCIAL LOSSES, REGARDLESS OF THEIR SIZE).
9. The present license contract is in effect world wide.
10. This license agreement does not require any additional fee in addition to conditions listed in paragraph 7
11. The present license contract is concluded for the term equal to the validity term of the exclusive right on the program.
12. The rightholder has the right to terminate the license contract in case of non-compliance with the terms and conditions of the contract. On termination of the contract you are obliged to destroy all copies of the program which you have.
13. The present license contract regulates the use of updates, addenda, which could be offered to you by the rightholder after your purchasing the initial copy of the program, if these updates and addenda are not accompanied by special conditions. The conditions

of the present contract could be modified for other version of the program.

14. The present license contract does not give any rights in respect of any trademarks, belonging to the rightholder or third party

## 2.2 Minimum computer requirements

Computer used for the device work should meet the following minimal requirements:

- USB-port;
- Installed Windows 7 or higher operating systems.

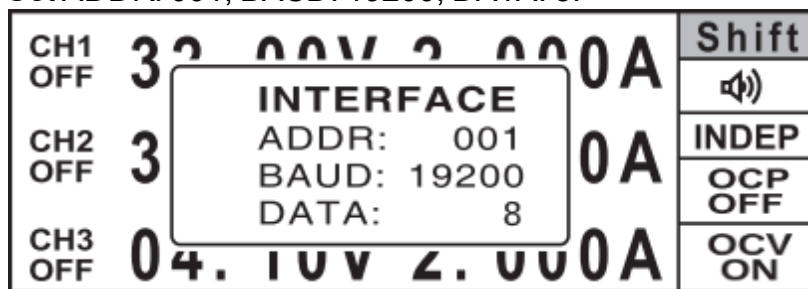
## 2.3 Preparation for use

### 2.3.1 Hardware installation

To connect the device it's necessary to:

- Press [**SHIFT**][**COMM**] into the interface of communication setting and use knob to switch to the corresponding parameters, which are to be revised and setting.

Set ADDR: 001, BAUD: 19200, DATA: 8.



- Connect the device to the PC USB-port by "A-B" type cable subject to the connection with the USB-port.

### 2.3.2 Software installation

Download software, run it and then follow the program installation instruction. After the installation process is completed there will be a program group created with shortcuts for the program and for its Help. You may start them using "Start" menu. Before using the device it's necessary to install a USB interface driver. All necessary files will be put into the program working folder, System subfolder, at the software installation.

### FTDI USB Driver (Virtual COM Port)

The virtual COM port driver is installed automatically when you install the application, but you can also install it manually later.

---

All necessary files are located in the program working directory, for example:  
C:\Program Files\AKTAKOM\AKTAKOM Power Manager Express 3\Driver

**INSTALLATION:**

Find and run CDM21228\_Setup.exe

### **2.3.3 Checking device readiness**

If you correctly installed the hardware and software components of the system, when you start the program, it will detect the operating device itself and inform you about the successful connection. Otherwise, the program will report that the device cannot be found and will work offline. This may be due to the fact that you have not connected the device to the computer port correctly or have not installed the necessary drivers, as described in the sections above.

## 3 Operating procedure

### 3.1 How to use the program

After starting the application, the main window will open:

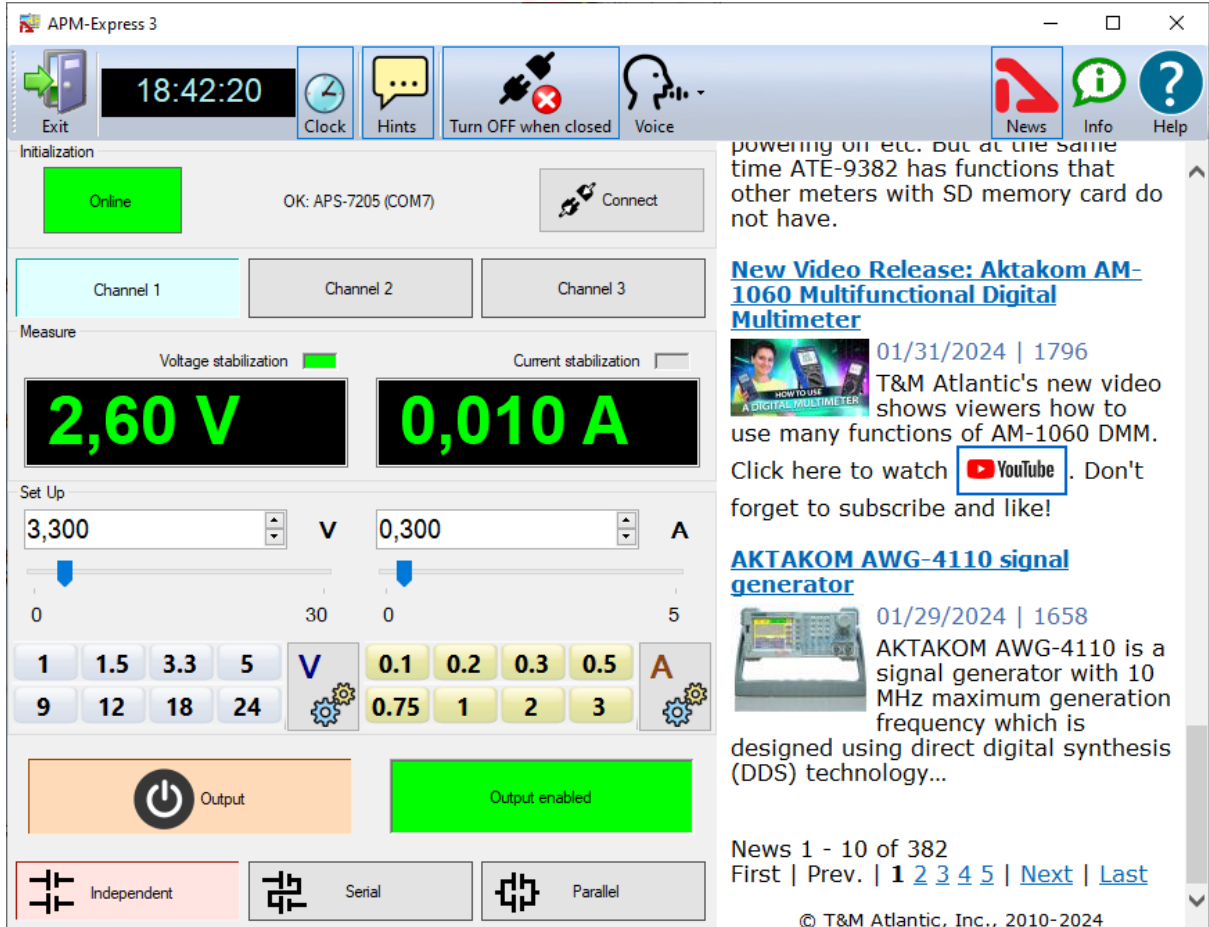


Figure 1. Main window

#### Upper panel buttons of the main window:

"Exit" button terminates the program operation.

The button with a **clock icon** shows or hides the clock display on the keypad.

"Hints" button shows or hides the keys caption text.

Button "**Turn OFF when closed**" - enables/disables the mode of automatic switching off of the outputs of the device at the end of the program.

"Voice" - Selects a Windows voice guide that will announce application events to you.

Select the "No voice" option to disable the voice guide.

"News" button shows or hides Aktakom news feed.

"Info" button displays the information about the program and connected device.

"Help" button recalls this help file.



Use **channel** buttons to select the channel to control and display.

The **Initialization** box is used to connect the device to the program. If the device was already connected to the PC via USB when the program was started, the program will connect it automatically. If you connected the device later, click the **Connect** button.

After successful connection of the device, the name and serial number of the device will be displayed in the initialization block. Otherwise, an error message will be displayed there.

The **Set Up** box allows you to control the parameters of the device. Panels with shortcut buttons are configured using the [dialog Preset settings](#).

Button **Output** - turns on / off the outputs of the device.

The **Measure** box shows the current state of the device - switching on outputs, output voltage and current, stabilization mode - by voltage or current.

Use the **Independent/Serial/Parallel** buttons to select the output operation mode.

### Remarks

The APS-7205 device in the basic configuration has some features of operation:

- there is no command to turn off remote operation
- to switch to local control, turn off and then turn on the power supply of the device.
- display of the current parameters on the screen of the device may not coincide with the readings of the program in the absence of a load connected to the device.

## 3.2 Voice Guide Mode

The main novelty of this software is the Voice Guide.

This Voice Guide announces all voltage current changes and power supply output status. This feature is very convenient because it allows you to work in the laboratory without paying attention to the power supply indicators. Your power supply will literally tell you what current or voltage it is outputting!

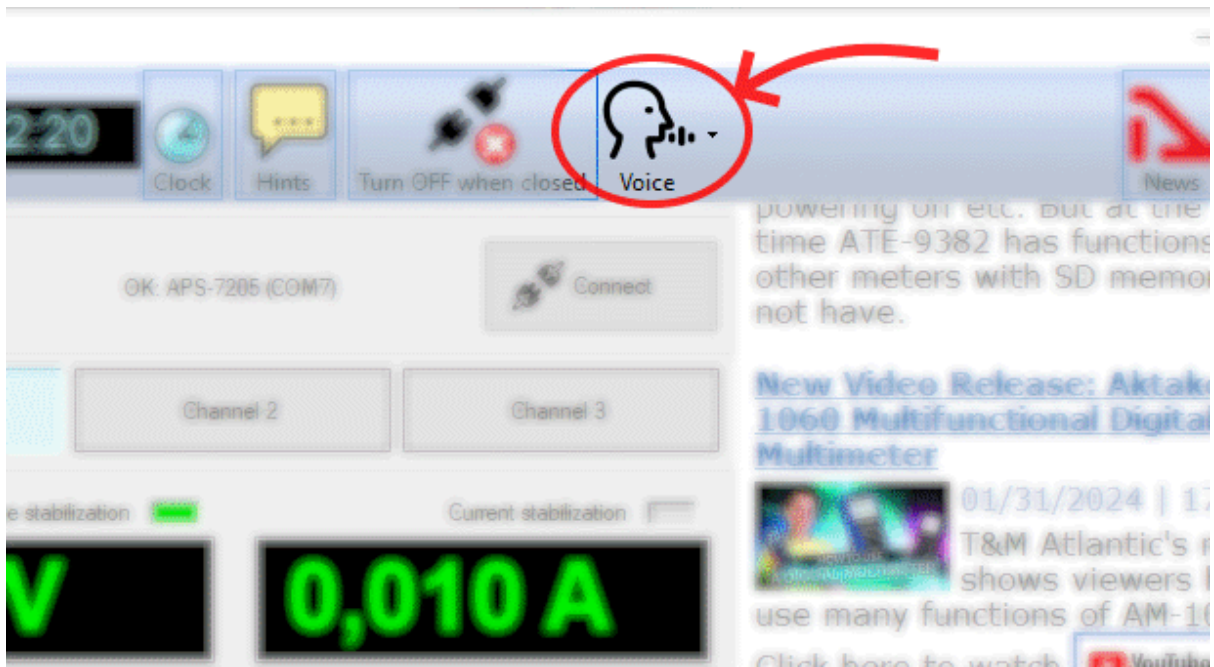


Figure 2. Voice Guide

Selects a Windows Voice Guide that will announce application events to you.  
Select the "No Voice" option to disable the Voice Guide

### 3.3 Presets list edit

The appearance of the dialog box in the picture below.

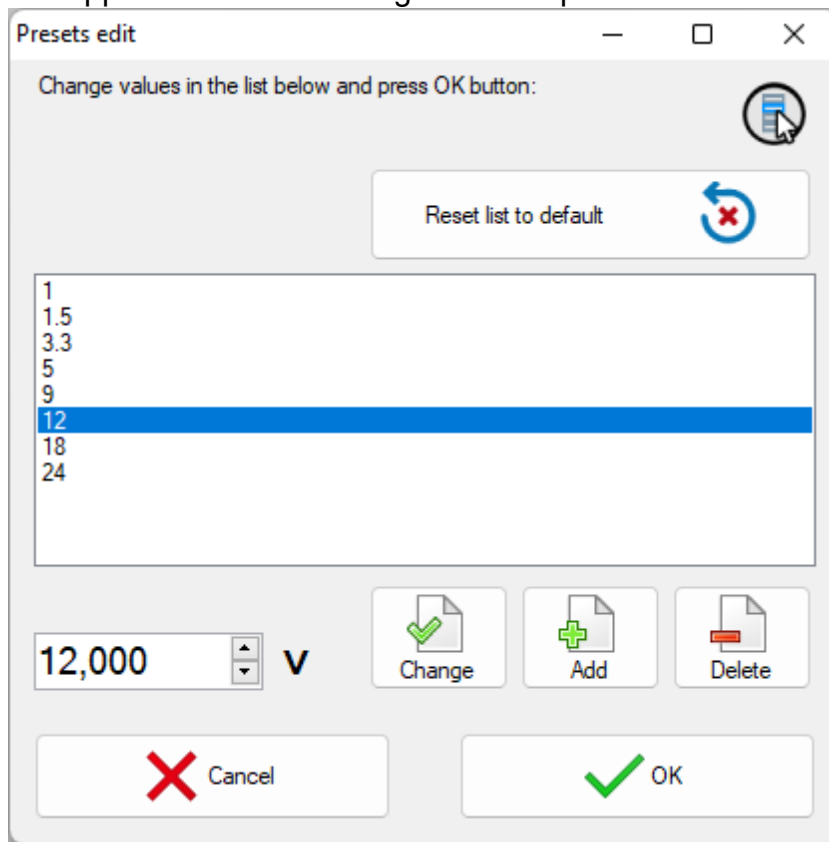


Figure 3. Presets list

The list of presets (shortcut buttons) is a list of Voltage or Current values, which can be set on the device “with one touch”. In dialogue editing presets in addition to the list itself, the program displays the following buttons:

**Reset list to default** - return the contents of the list to default values.

**Change** - replace the selected line of the list with the entered value.

**Add** - add a new value to the list.

**Delete** - remove the current line from the list.

**Cancel** - close the dialog without saving changes.

**OK** - save changes and close the dialog.

## 4 Service

### 4.1 Update and technical support

 To update the software and receive AKTAKOM proprietary technical support, visit our website: [www.tmatlantic.com](http://www.tmatlantic.com)



You can also send your questions, wishes and suggestions by:  
[it\\_dep@tmatlantic.com](mailto:it_dep@tmatlantic.com)