



## AMM-1139 SETUP GUIDE

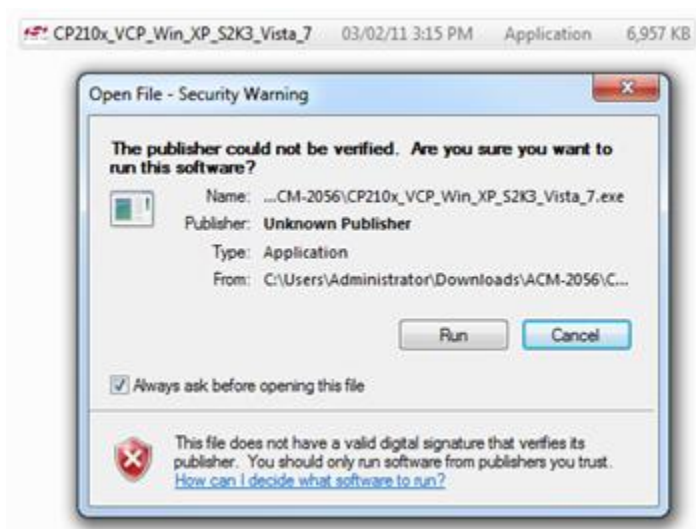
Using either the CD that comes with your equipment or if you downloaded an installation file from our website please note, that this is correct procedure to install and use the AKTAKOM AMM-1139 digital multimeter application software.

1. Setting up the Driver in your PC. Please do not connect the USB device yet.

The driver will allow your computer to recognize the USB or USB wireless device so you can communicate in both directions using the AKTAKOM application software.

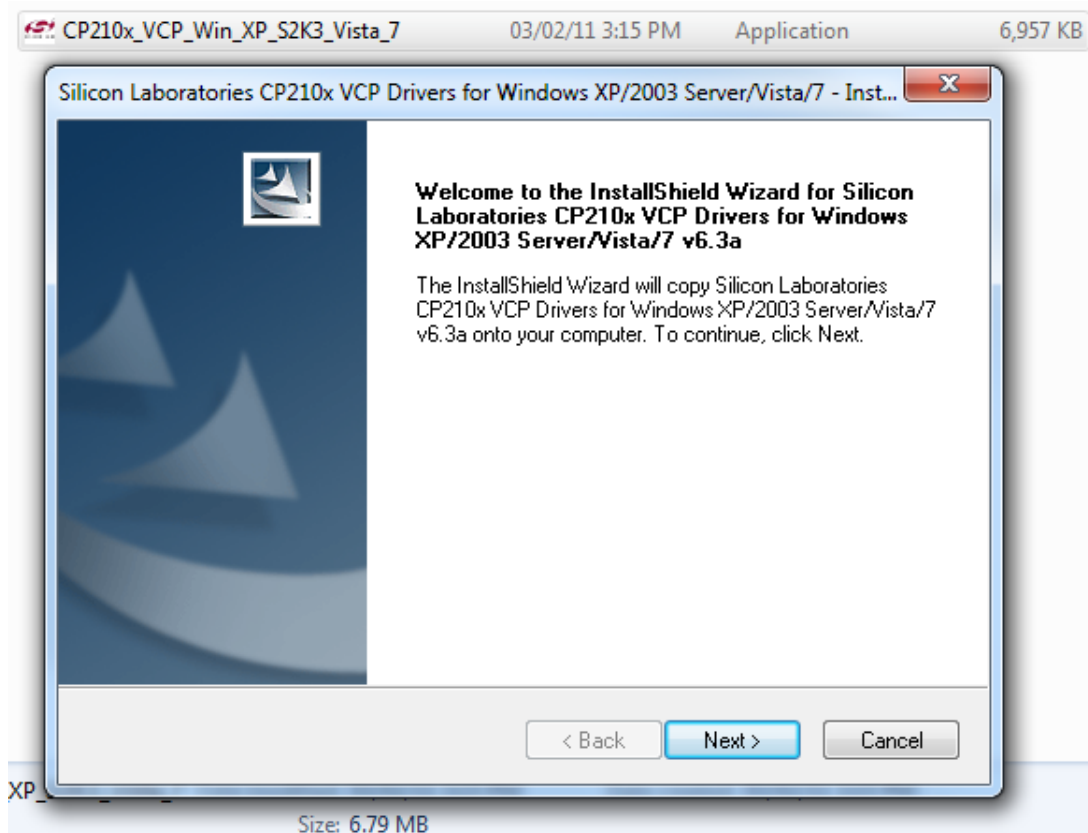
AKTAKOM AMM-1139 driver installs:

Double click the CP210x\_VCP\_Win\_XP\_S2K3\_Vista\_7.exe driver file.



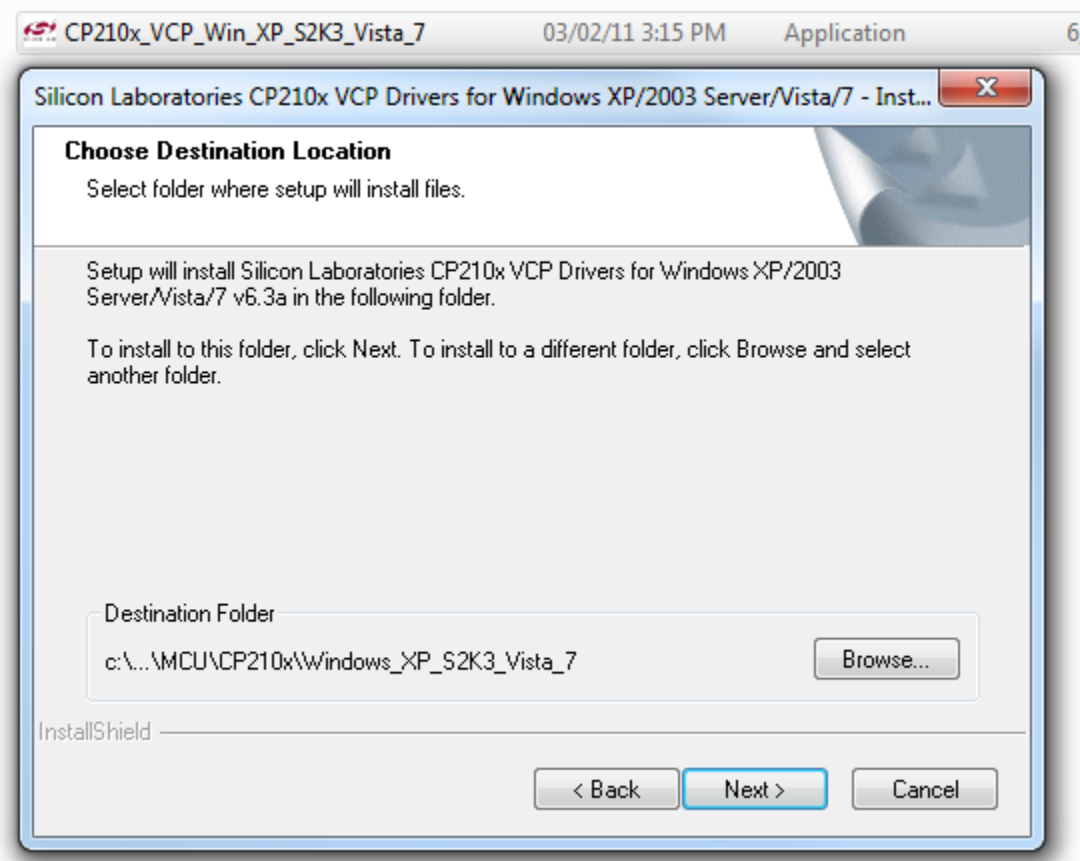
Now click to run the driver in to your computer then NEXT and please agree with the end user license agreement.

## AMM-1139 SETUP GUIDE



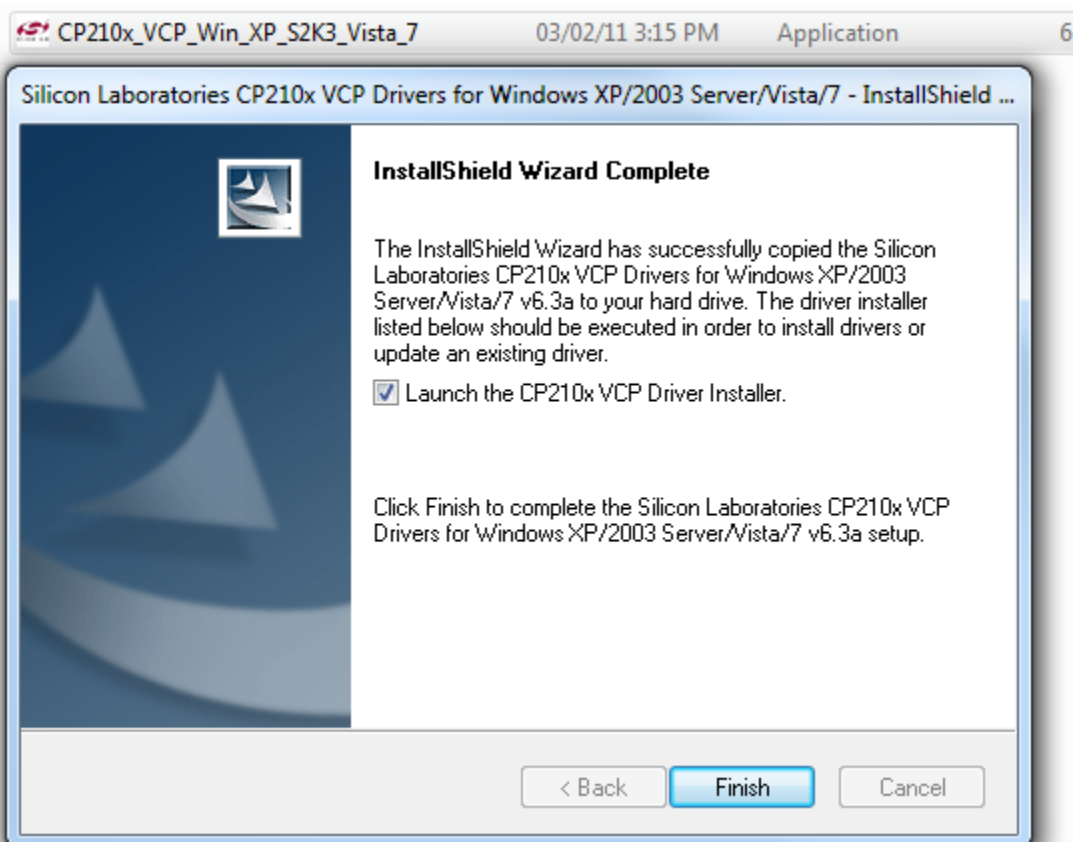
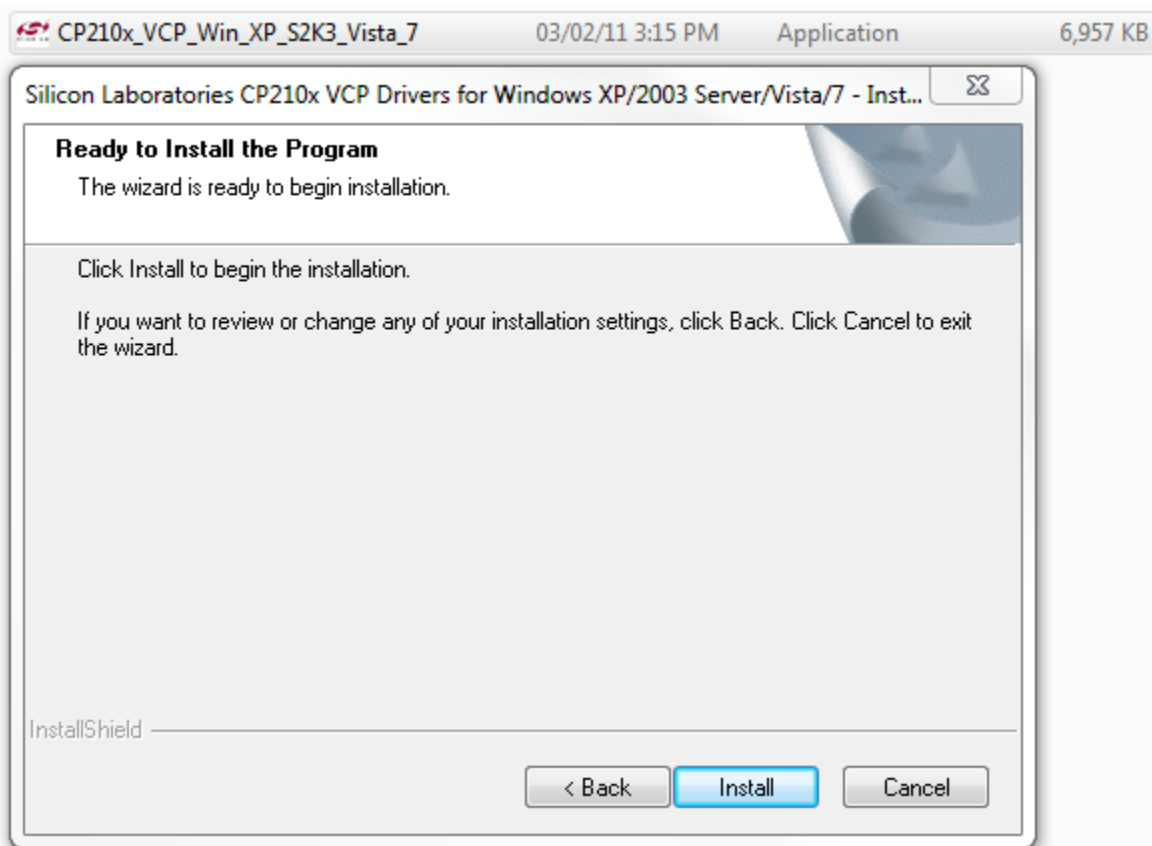


## AMM-1139 SETUP GUIDE





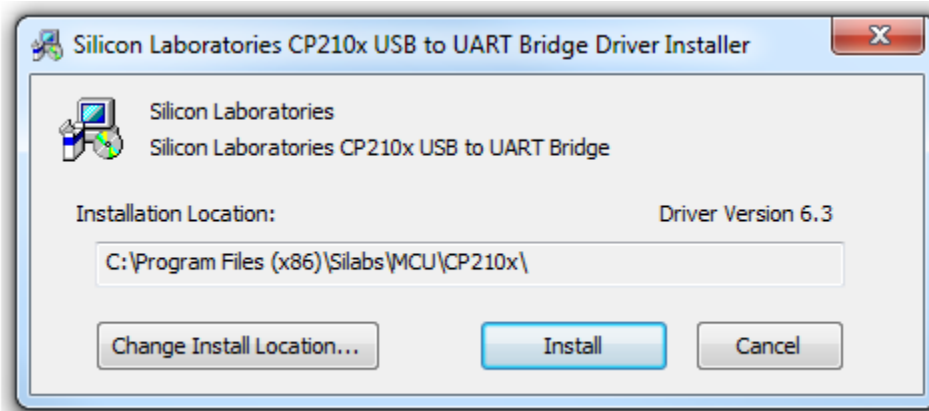
## AMM-1139 SETUP GUIDE





## AMM-1139 SETUP GUIDE

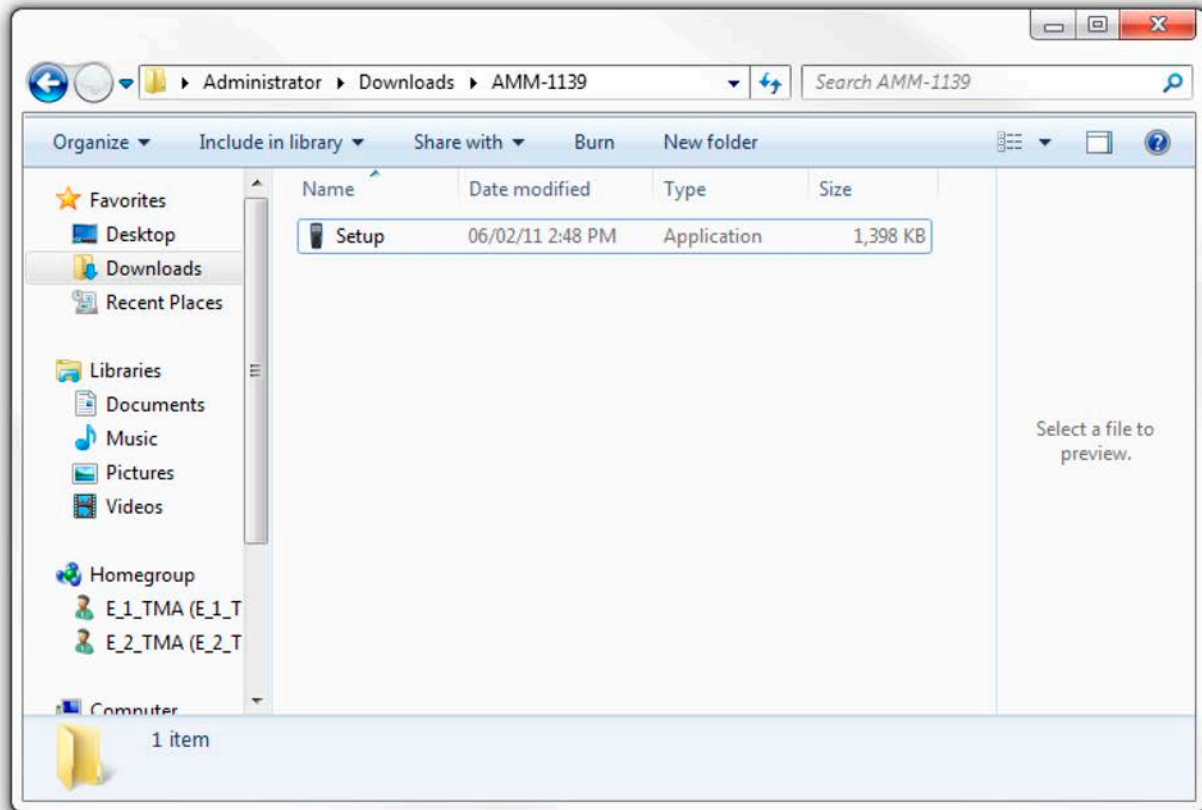
- **At this moment**, you must connect the USB device so the driver software can find the USB communication port.





## AMM-1139 SETUP GUIDE

2. Installing AKTAKOM AMM-1139 application software (as administrator only):



Please double click to start setup



This is a transition screen for you to know that you are installing the AKTAKOM ACM-2056

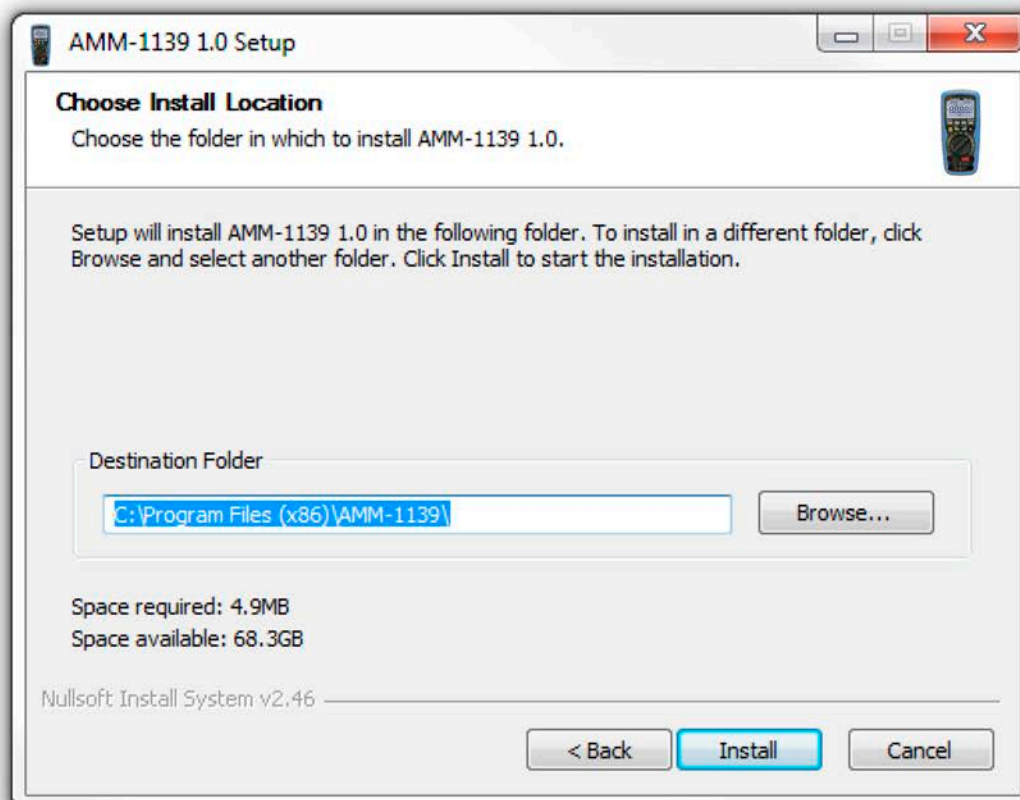
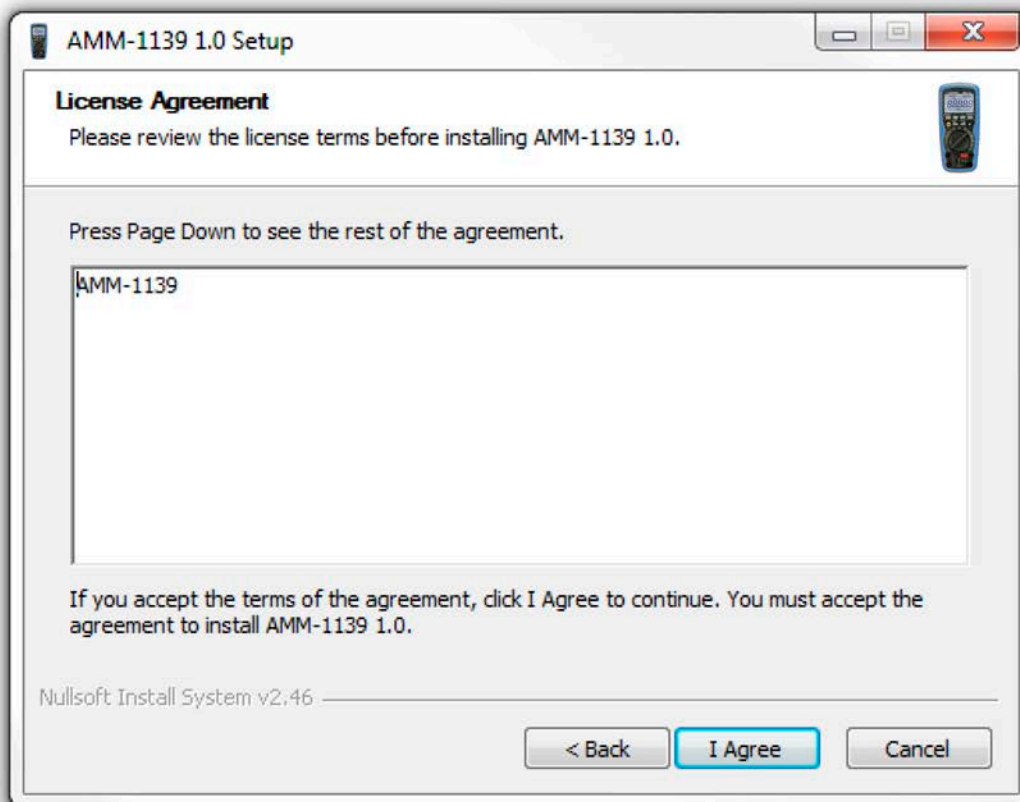


## AMM-1139 SETUP GUIDE



This will install the AMM-1139 Software application

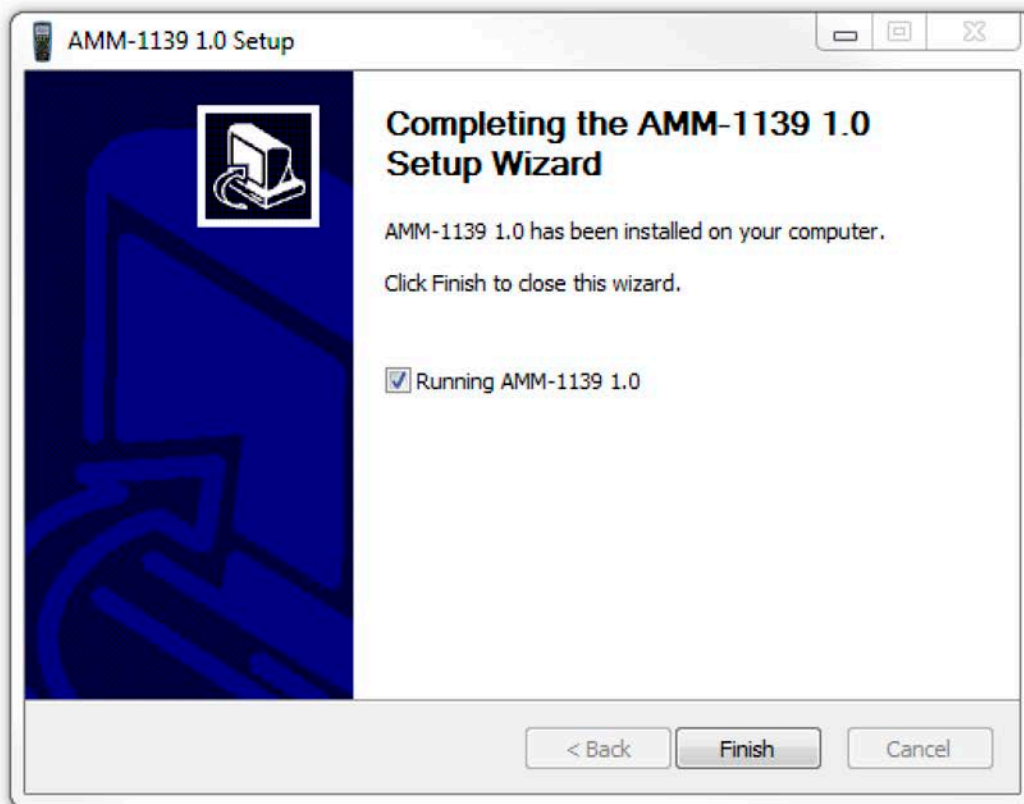
## AMM-1139 SETUP GUIDE







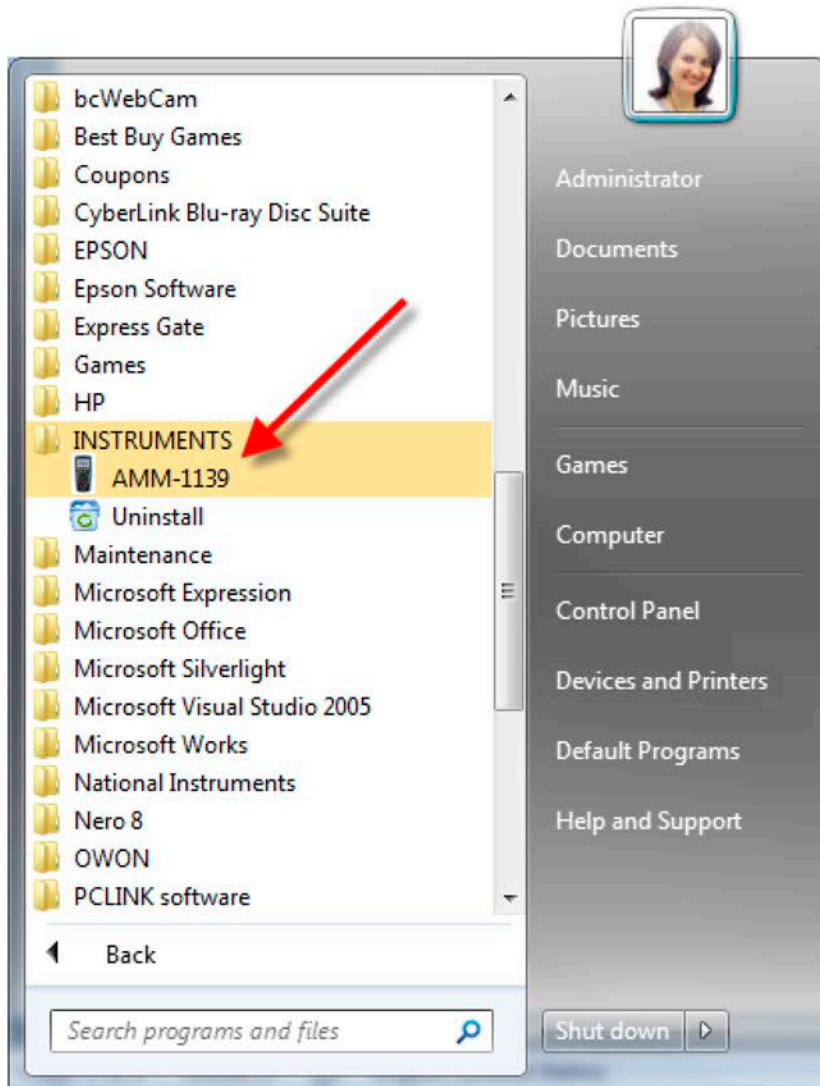
## AMM-1139 SETUP GUIDE



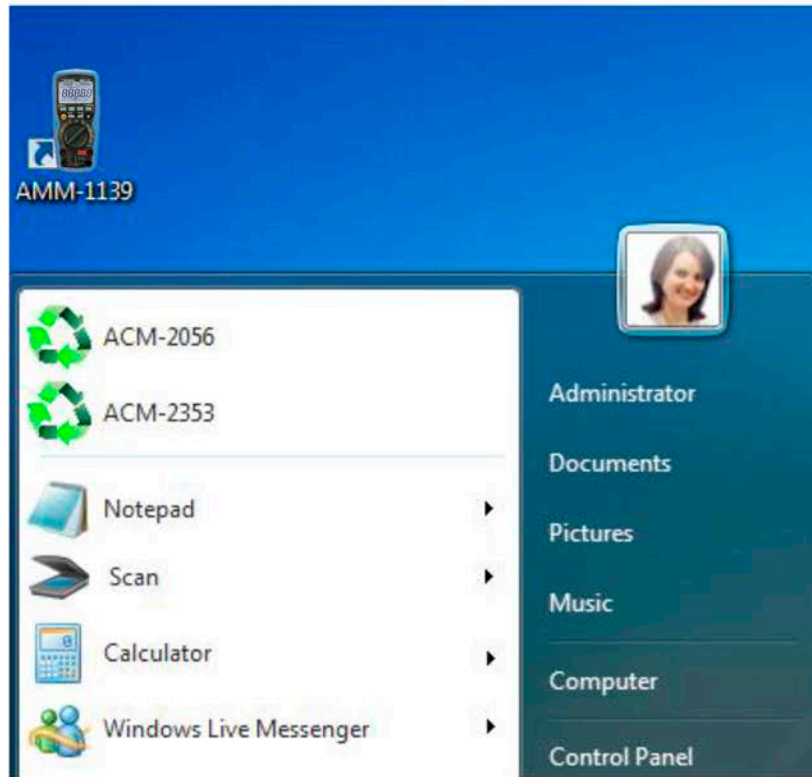
3. Launching your application software application so then will appear on your screen the equipment. (There may be different color and model number).



## AMM-1139 SETUP GUIDE




You may see the complete software application menu in your Windows all programs start button. Also a quick hyperlink icon will appear in your menu bar and desktop. Please fill free to start the application from any of them.



#### 4. Connecting your equipment using the USB wireless device



Please press  light button for 2 seconds till you hear a sound stops and press again, the USB function icon shall appears on the LCD. When you have finish press the button again to return to normal operation.

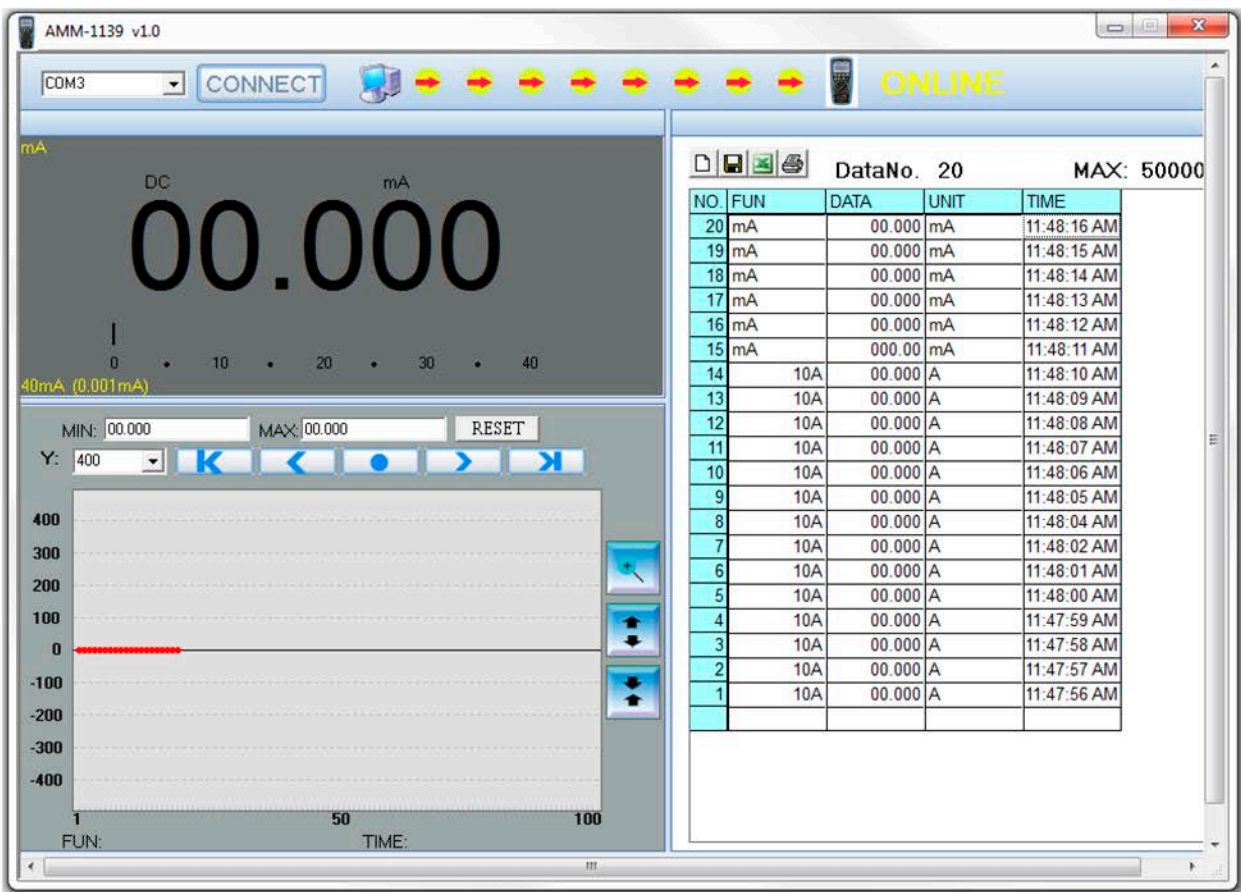


## AMM-1139 SETUP GUIDE



Be aware that Wireless USB function turn off the Auto Power function that may cause you to lose all of your battery. If you don't turn on the Wireless USB function, the meter will auto shut off after 30 minutes.

As soon as you connect the Wireless USB device data appears on the screen of your virtual equipment in your computer.



Graph screen shall print in default printer only.

From now on you will be able to read measurements from your equipment up to 330 ft at an unobstructed field.

Just press Exit to close the application software and do not forget to turn off the equipment to save battery.